

LEGEND.

A SMALL SIZE LED ROAD LIGHTING LANTERN WITH 24 LEDS DRIVEN AT 500MA WITH WIDE ROAD OPTIC. ELECTRONIC, FIXED OUTPUT CONTROL GEAR. CLASS II ELECTRICAL, IP66, IK08. HOUSING: DIECAST ALUMINIUM, POWDER COATED TEXTURED LIGHT GREY, DIFFUSER: TEMPERED FLAT GLASS. TOTAL POWER: 37W COLUMNS ARE 6M HIGH.10 DEGREE TILT AT 6M AFSL. PRODUCT CODE:96266034

A SMALL SIZE LED ROAD LIGHTING LANTERN WITH 12 LEDS DRIVEN AT 350MA WITH PEDESTRIAN WALKWAYS & CYCLE PATHS OPTIC. ELECTRONIC, FIXED OUTPUT CONTROL GEAR. CLASS II ELECTRICAL, IP66, IK08. HOUSING: DIE-CAST ALUMINIUM, POWDER COATED TEXTURED LIGHT GREY, DIFFUSER: TEMPERED FLAT GLASS. SCREWS: STAINLESS STEEL, ECOLUBRIC® TREATED. POST TOP (Ø60/76MM, TILTED 0°/5°/10°) OR LATERAL (Ø34/42/49/60MM, TILTED 0°/5°/10°/15°) MOUNTING. COMPLETE WITH 4000K LED. TOTAL POWER: 15W COLUMNS ARE 6M HIGH.10 DEGREE TILT AT 6M AFSL. PRODUCT CODE:96270536

UNMETERED ESB MICRO PILLAR ASSOCIATED WITH PUBLIC LIGHTING.

SPORTS FIELD ARMSTRONG JUNCTION.

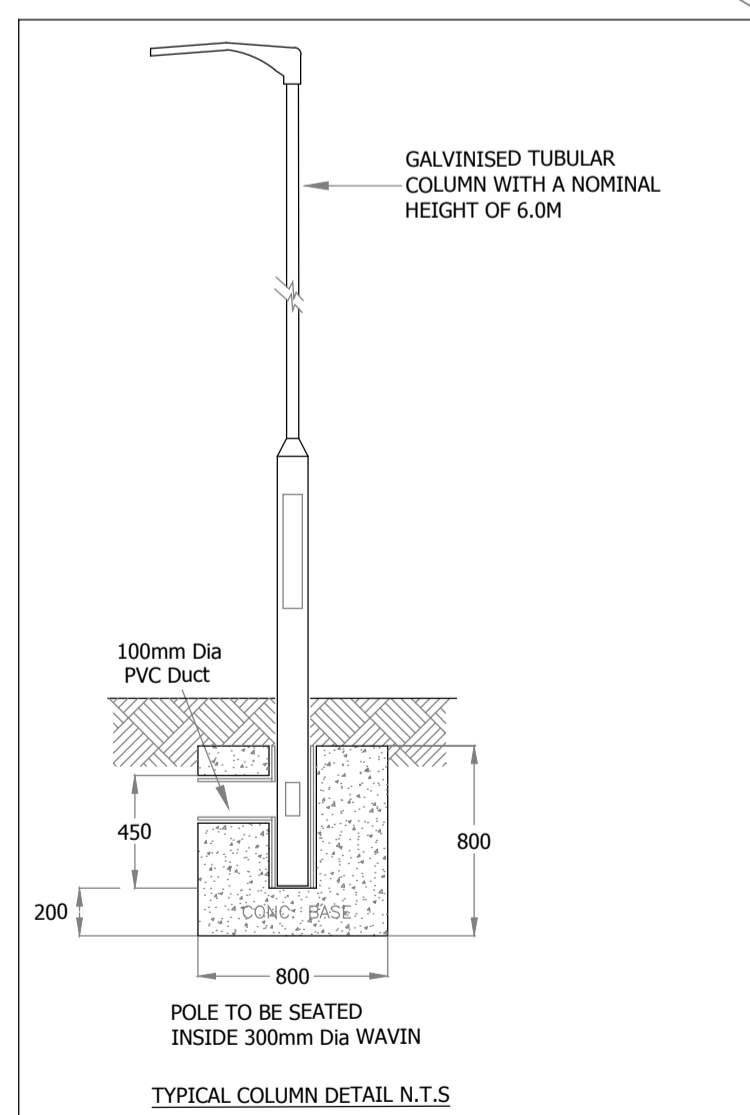
1 NO. 100mm Ø PVC CABLE DUCT LAID IN A TRENCH AS PER ATTACHED DETAIL. 1 NO. PUBLIC LIGHTING. ALL BENDS & RISES SHALL BE COMPLETED USING LONG RADIUS BENDS.

1 NO. 150mm Ø PVC CABLE DUCTS LAID IN A TRENCH AS PER ATTACHED DETAIL. (MANS CABLE) ALL BENDS & RISES SHALL BE COMPLETED USING LONG RADIUS BENDS.

NEW 600mm. SQUARE DRAW CHAMBER C/W c125 RATED COVER FOR PUBLIC LIGHTING CHAMBER TO BE COMPLETE WITH DRAIN FROM BASE WHICH SHALL BE MIN. 200mm. BELOW THE LOWEST INCOMING DUCT.

NEW MINI PILLAR.

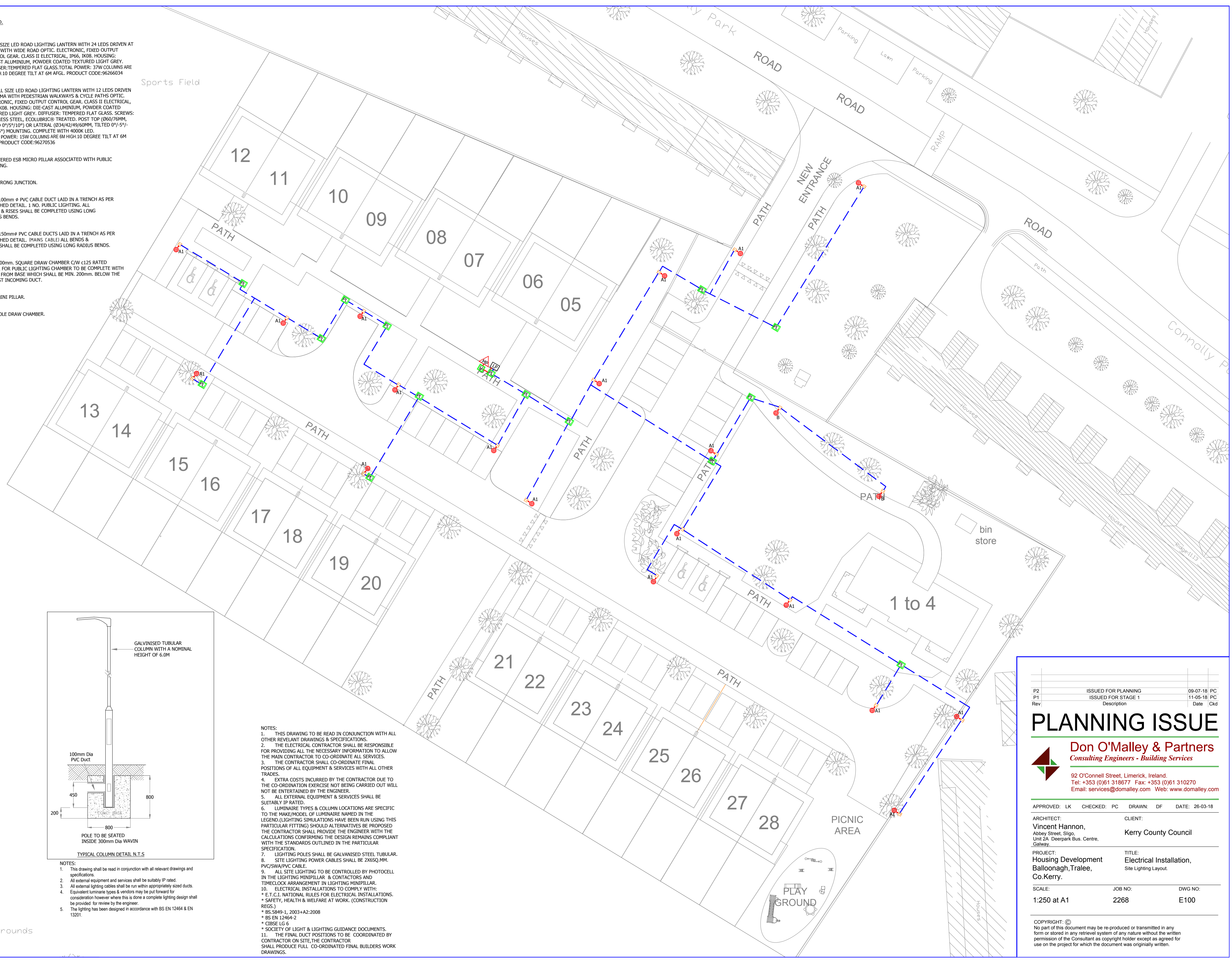
MANHOLE DRAW CHAMBER.



- NOTES:
- This drawing shall be read in conjunction with all relevant drawings and specifications.
 - All external equipment and services shall be suitably IP rated.
 - All external lighting cables shall be run within appropriately sized ducts.
 - Equivalent luminaire types & vendors may be put forward for consideration however where this is done a complete lighting design shall be provided for review by the engineer.
 - The lighting has been designed in accordance with BS EN 12464 & EN 13201.

NOTES:

- THIS DRAWING TO BE READ IN CONJUNCTION WITH ALL OTHER RELEVANT DRAWINGS & SPECIFICATIONS.
- THE ELECTRICAL CONTRACTOR SHALL BE RESPONSIBLE FOR PROVIDING ALL THE NECESSARY INFORMATION TO ALLOW THE MAIN CONTRACTOR TO CO-ORDINATE ALL SERVICES.
- THE CONTRACTOR SHALL CO-ORDINATE FINAL POSITIONS OF ALL EQUIPMENT & SERVICES WITH ALL OTHER TRADES.
- EXTRA COSTS INCURRED BY THE CONTRACTOR DUE TO THE CO-ORDINATION EXERCISE NOT BEING CARRIED OUT WILL NOT BE ENTERTAINED BY THE ENGINEER.
- ALL EXTERNAL EQUIPMENT & SERVICES SHALL BE SUITABLY IP RATED.
- LUMINAIRE TYPES & COLUMN LOCATIONS ARE SPECIFIC TO THE MAKE/MODEL OF LUMINAIRE NAMED IN THE LEGEND. (LIGHTING SIMULATIONS HAVE BEEN RUN USING THIS PARTICULAR FITTING) SHOULD ALTERNATIVES BE PROPOSED THE CONTRACTOR SHALL PROVIDE THE ENGINEER WITH THE CALCULATIONS CONFIRMING THE DESIGN REMAINS COMPLIANT WITH THE STANDARDS OUTLINED IN THE PARTICULAR SPECIFICATION.
- LIGHTING POLES SHALL BE GALVANISED STEEL TUBULAR.
- SITE LIGHTING POWER CABLES SHALL BE 2X6SQ.MM. PVC/SWA/PVC CABLE.
- ALL SITE LIGHTING TO BE CONTROLLED BY PHOTOCELL IN THE LIGHTING MINIPILLAR. & CONTRACTORS AND TIMELOCK ARRANGEMENT IN LIGHTING MINIPILLAR.
- ELECTRICAL INSTALLATIONS TO COMPLY WITH:
 - E.T.C.I. NATIONAL RULES FOR ELECTRICAL INSTALLATIONS.
 - SAFETY, HEALTH & WELFARE AT WORK. (CONSTRUCTION REGS.)
 - BS 5849-1, 2003+A2:2008
 - BS EN 12464-2
 - CIBSE LG 6
 - SOCIETY OF LIGHT & LIGHTING GUIDANCE DOCUMENTS.
- THE FINAL DUCT POSITIONS TO BE CO-ORDINATED BY CONTRACTOR ON SITE. THE CONTRACTOR SHALL PRODUCE FULL CO-ORDINATED FINAL BUILDERS WORK DRAWINGS.



P2	ISSUED FOR PLANNING	09-07-18	PC
P1	ISSUED FOR STAGE 1	11-05-18	PC
Rev	Description	Date	Ckd

PLANNING ISSUE

Don O'Malley & Partners
Consulting Engineers - Building Services

92 O'Connell Street, Limerick, Ireland.
Tel: +353 (0)61 318677 Fax: +353 (0)61 310270
Email: services@domalley.com Web: www.domalley.com

APPROVED: LK CHECKED: PC DRAWN: DF DATE: 26-03-18

ARCHITECT: Vincent Hannon, Abbey Street, Sligo, Unit 2A Deerpark Bus. Centre, Galway.

CLIENT: Kerry County Council

PROJECT: Housing Development, Ballyonagh, Tralee, Co.Kerry.

TITLE: Electrical Installation, Site Lighting Layout.

SCALE: 1:250 at A1 JOB NO: 2268 DWG NO: E100

COPYRIGHT: © No part of this document may be re-produced or transmitted in any form or stored in any retrieval system of any nature without the written permission of the Consultant as copyright holder except as agreed for use on the project for which the document was originally written.